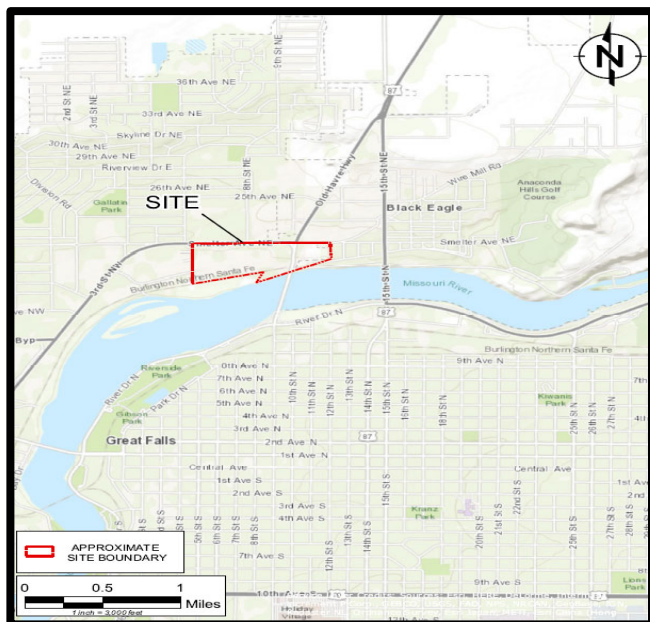


**CMR is providing this fact sheet to explain remediation activities at the Site, but it is not a technical document.**

## **Introduction**

The purpose of this document is to provide an update to the general public and local residents that live near the Calumet Montana Refinery, LLC (CMR) located at 1900 10th Street N.E. Great Falls, Montana (as shown below). Current status and planned remediation activities at the Site are described in this Fact Sheet.



## **Site History**

The Site has operated as a refinery since 1922 under numerous owner/operators. Between 1979 to 1985 a land treatment unit (LTU) was operated at the Site to treat petroleum impacted wastes. The LTU was considered a regulated unit under the Montana Hazardous Waste Act and federal Resource Conservation and Recovery Act (RCRA) and a hazardous waste permit was required.

The facility was issued hazardous waste permit MTHWP-95-02 on September 22, 1995. The permit was issued jointly by the Montana Department of Environmental Quality (MDEQ) and the United States Environmental Protection Agency (USEPA) and included requirements for post-closure care of the LTU and for facility-wide corrective action.

In September 2012, hazardous waste permit MTHW-95-02 was terminated and a Corrective Action Order on Consent (Order) was issued by MDEQ to oversee the clean-up of the Site. CMR acquired the refinery in 2012 and currently produces approximately 30,000 barrels a day of various petroleum products. The Site occupies approximately 56 acres.

## **Corrective Action**

As part of the facility-wide corrective action, CMR is required to clean-up contaminated soil and groundwater at the Site. Specific areas have been identified as having contaminated soil and/or groundwater. Recently, CMR with MDEQ's support has completed the following activities in relation to the corrective action:

- From February 2014 to August 2015, approximately 94,400 tons of hazardous and non-hazardous soils were excavated and transported to an off-site disposal area as part of the Lead Consolidation Area (LCA) Interim Measure (IM) work activities.
- In March 2019, CMR initiated a two-year quarterly groundwater monitoring effort throughout the Site to document the current impact of petroleum constituents to Site groundwater. This work culminated with the submittal of a 2020/2021 Annual Groundwater Sampling Report that contained an updated Conceptual Site Model (CSM).
- In April 2019, CMR initiated additional soil and groundwater IM investigative activities of the West Rail Loading Rack and the East Rail Loading Rack. A Rail Investigative Area IM Field Investigation Report was submitted to MDEQ in September 2019 and updated in a subsequent September 2021 submittal to account for a better understanding of subsurface conditions in accordance with the updated CSM.
- In July 2019, CMR initiated a Human Health Risk Assessment (HHRA) for the Old Poned Area. The HHRA report was submitted to MDEQ in September 2019. CMR subsequently submitted a Change of Use Notification for the Old Poned Area in July 2021 which MDEQ approved in August 2021 that will functionally defer the determination as to whether any additional response actions for this area will be

necessary until the completion of the upcoming RCRA Facility Investigation (RFI).

- In August 2019, at the request of MDEQ, USEPA and their contractor, Hydrogeologic Inc., initiated an optimization review of the ongoing RCRA corrective action program at the CMR. An Optimization Review Report was issued in April 2020. This report presented an evaluation of the site's groundwater monitoring system, the CSM, general recommendations for groundwater remedies potentially applicable to the site, evaluation of site RCRA environmental indicators, and recommendations as to how to proceed with the RFI.
- In July 2021, CMR initiated construction of two Truck Loading Rack IM remedies that included dual phase extraction (DPE) with catalytic thermal oxidizer air treatment, a Light Non-Aqueous Phase Liquid (LNAPL) recovery trench, and a passive treatment trench (PTT). The DPE treatment system has completed the start-up and commissioning phases and is now operational.



## Future Activities

CMR will conduct the following activities to continue to address corrective actions as part of the Order.

- Continued operation, maintenance, and monitoring (OM&M) of the Truck Loading Rack IM DPE treatment system, the LNAPL recovery trench, and the PTT.
- Initiate RFI and Risk Assessment scoping with MDEQ in the 2<sup>nd</sup> Quarter 2022.
- Initiate RFI and Risk Assessment project plans preparation in the 3<sup>rd</sup> Quarter 2022.
- Initiate RFI field data collection activities in the 3<sup>rd</sup> Quarter of 2023.



## Community Involvement

Throughout the IM and upcoming RFI process, CMR will keep the public informed through fact sheets, press releases, meetings and other appropriate activities. CMR will respond to public inquiries regarding questions pertaining to the IMs and upcoming RFI process.

## Information Repository

An information repository has been established to store publicly available documents related to recent corrective action activities. The Information Repository can be found at [www.CMRsite.com/repository](http://www.CMRsite.com/repository).

## For More Information

Additional and up to date information for the CMR Site can be found at [www.CMRsite.com](http://www.CMRsite.com).

If you have questions or need more information, please contact the following CMR or MDEQ representatives:

Mr. Joe Dauner  
Environmental Manager  
Calumet Montana Refinery  
1900 10th Street NE  
Great Falls, MT 59404  
Phone: (406) 454-9887  
Email: [joseph.dauner@calumetspecialty.com](mailto:joseph.dauner@calumetspecialty.com)

Mr. David T. Heidlauf, CPG  
Principal Environmental Consultant  
Ramboll US Consulting, Inc.  
333 West Wacker Drive, Suite 2700  
Chicago, IL 60606  
Phone: (312) 288-3823  
Email: [dheidlauf@ramboll.com](mailto:dheidlauf@ramboll.com)

Ms. Erica K. Shuhler, P.E.  
Hazardous Waste Specialist  
Montana Department of Environmental Quality  
Waste and Underground Tank Management Bureau  
P.O. Box 200901  
Helena, MT 59620-0901  
Phone: (406) 444-5258  
Email: [erica.shuhler@mt.gov](mailto:erica.shuhler@mt.gov)